



ARUN EXCELLO™

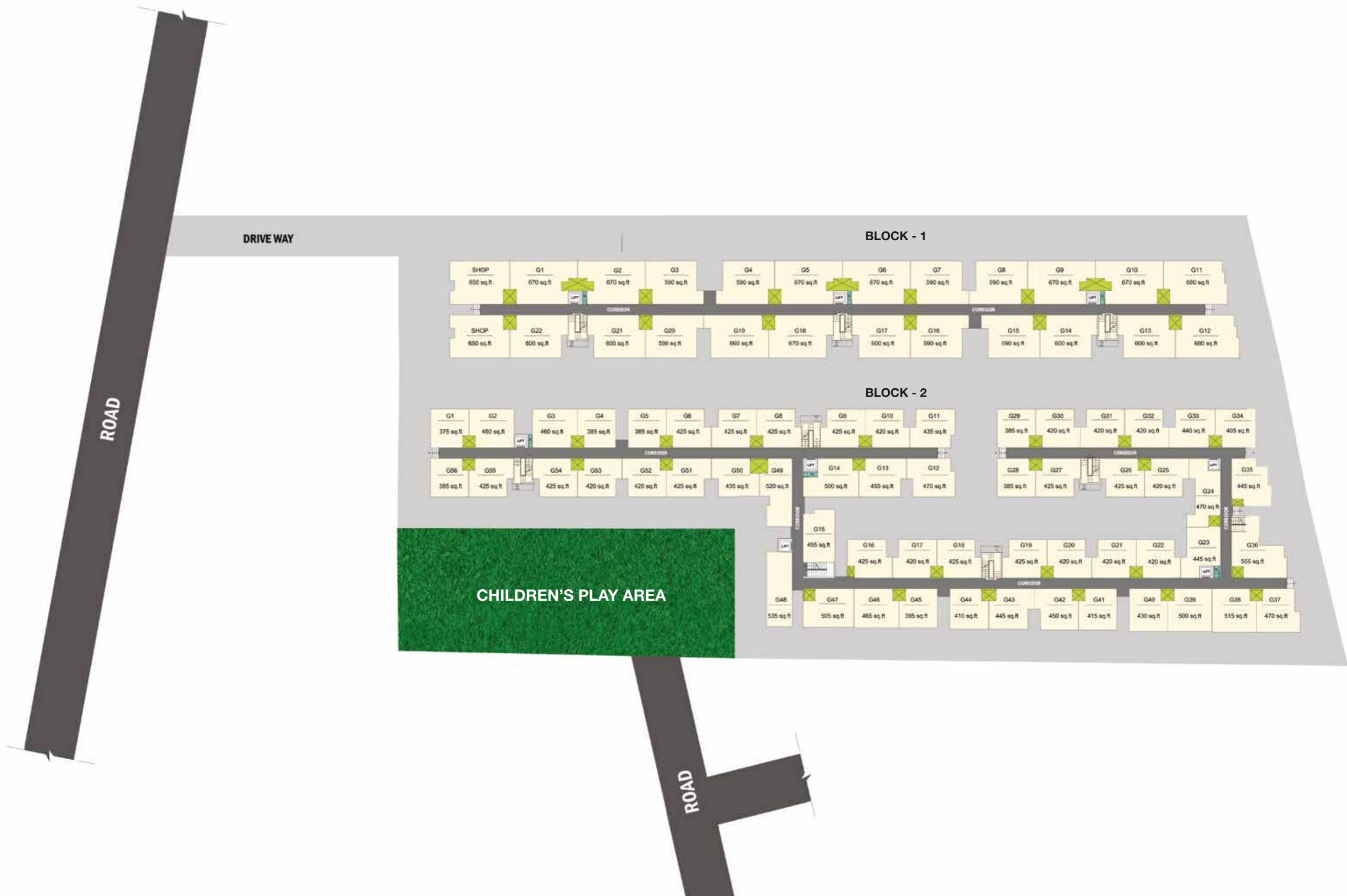
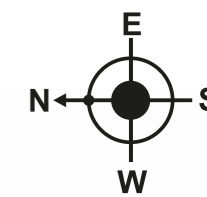
COMPACT
homes

URMIKA

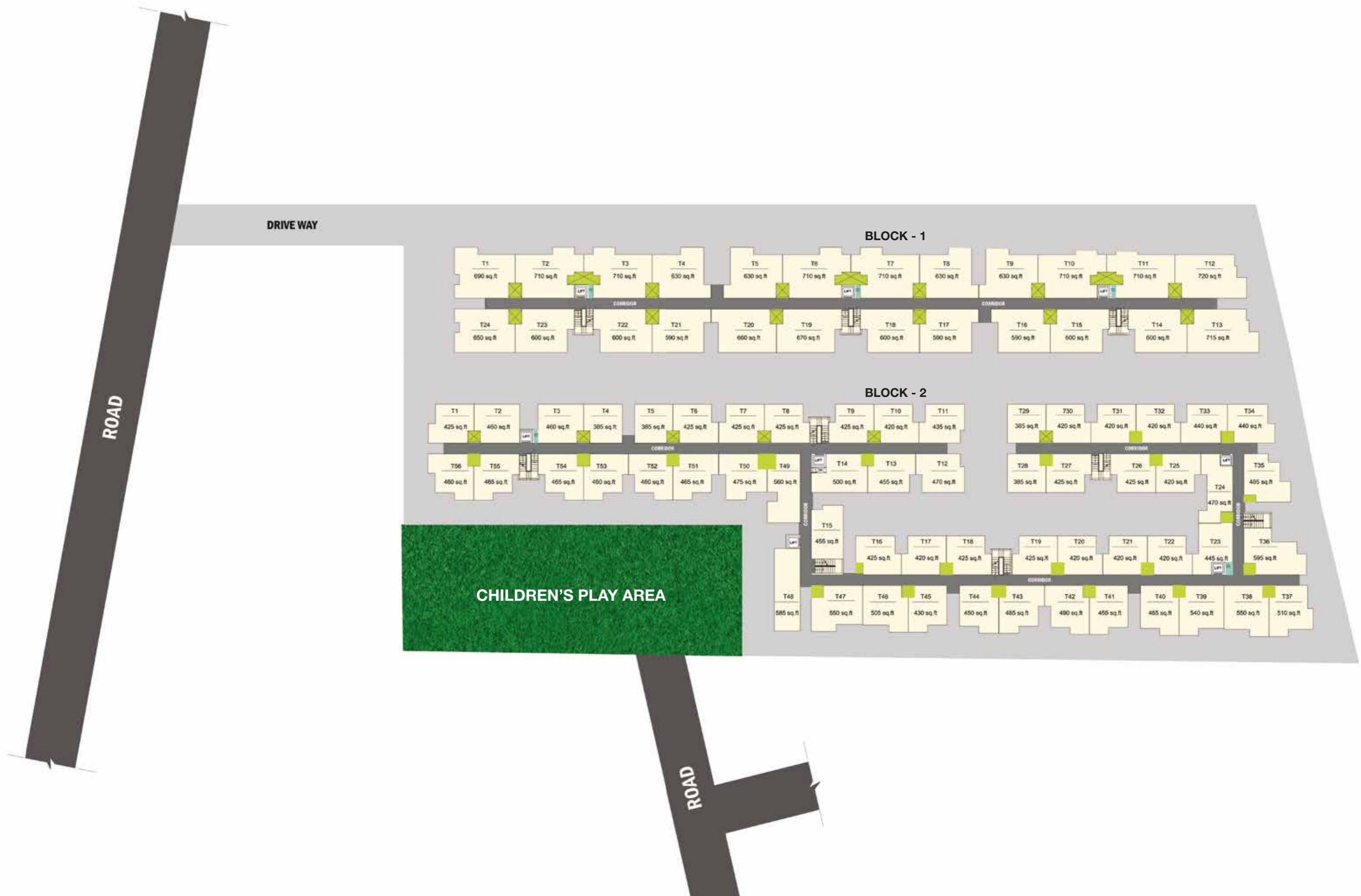
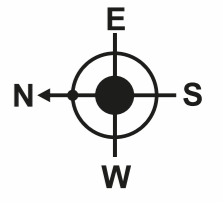
near MARAIMALAI NAGAR



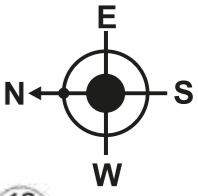
SITE PLAN - GROUND FLOOR



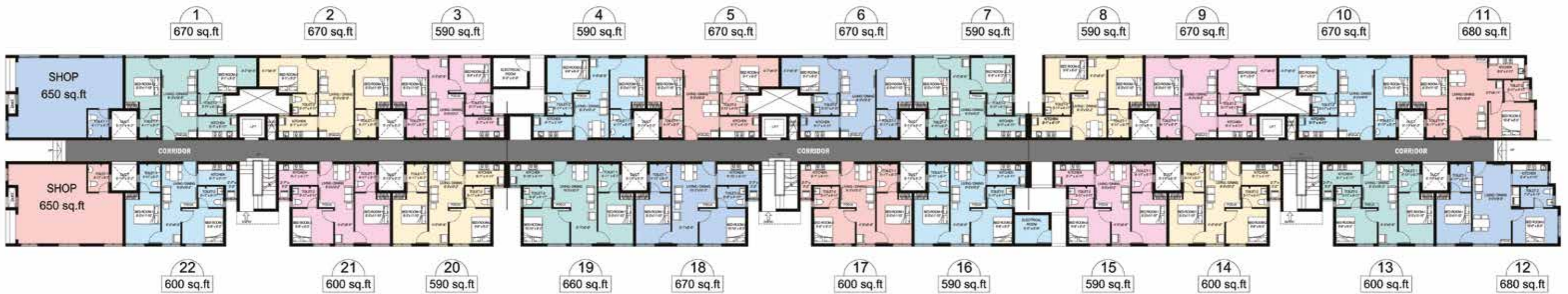
SITE PLAN - TYPICAL FLOOR

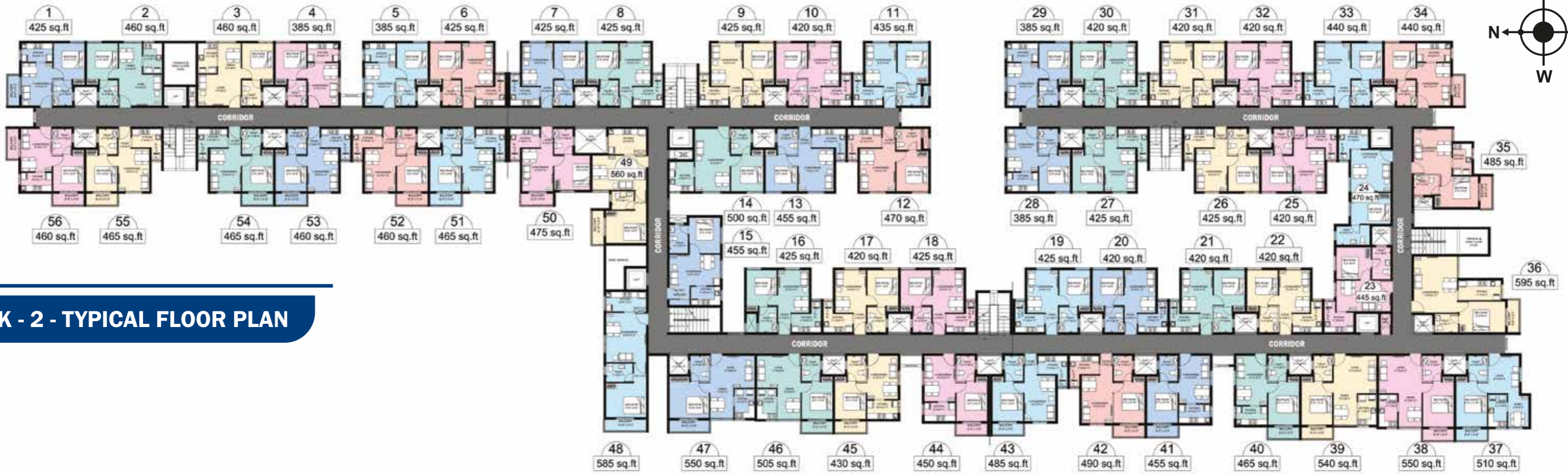
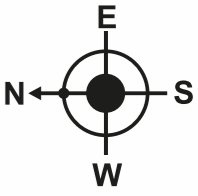


BLOCK - 1 - TYPICAL FLOOR PLAN



BLOCK - 1 - GROUND FLOOR PLAN





BLOCK - 2 - TYPICAL FLOOR PLAN



BLOCK - 2 - GROUND FLOOR PLAN

SPECIFICATIONS

STRUCTURE

- RCC framed structure
- Masonry for External & Internal Walls

FLOORING

- Glossy Vitrified tile for Living, Dining, Kitchen and Bedroom
- Anti-skid Ceramic tiles for Toilet

JOINERY

- Treated Wood Door Frames with Flush Shutter for Main and Bedroom door
- Plastic coated flush door for toilet
- Anodized / Powder coated Aluminium Framed Glazed Windows and Ventilators

BEDROOM

- Glossy Vitrified tiles for flooring with skirting
- Loft and Wardrobe provision in bedroom
- AC point in one bedroom

KITCHEN

- Polished Granite Counter Top and Ceramic Glazed Tile Dado up to 1'8" above the working platform
- Stainless Steel Sink with single bowl
- Exhaust Fan point
- Loft and Shelf provision

SANITARY FITTINGS

- Floor mounted EWC with flush tank, Washbasin of white colour
- Wall Mixer for Hot and Cold water in one toilet
- Provision for health faucet

PAINTING

- **Internal Walls:**
One Coat Primer + 2 Coat Putty + 2 Coat Acrylic Emulsion
- **External walls:**
One Coat Primer + 2 Coat Exterior Emulsion Paint

TOILET

- Ceramic Glazed Tile Dado up to Five feet Height
- Anti-skid ceramic tiles for flooring
- Geyser point in one toilet with wall mixer
- Provision for health faucet

ELECTRICAL

- PVC conduits and fully concealed wiring works
- Exhaust fan provision in Kitchen
- Modular Switches from Anchor or equivalent
- TV point in Living room
- AC point in one bedroom
- D.G Power backup for Common area lighting and amenities
- Solar Power will be provided.
- Single Phase (1 BHK) & 3 Phase (2 BHK) Connection.

SALIENT FEATURES

- Located close to GST road with good road access and well connected to the city, IT and Automobile corridor.
- Proximity to Ford India/Mahindra World city and Maraimalai Nagar SIPCOT.
- Easy access to both Rail & Road Connectivity.
- Close to Educational Institutions and Hospitals.
- Optimum Design with minimal common space.
- Good potable ground water, Clear title, good specification and Sturdy construction.
- Assured Rental returns for investment.
- Gated Community.

AMENITIES



DG Power Backup



STP with grey water recycling



Lifts



Children Play area



Landscape Garden

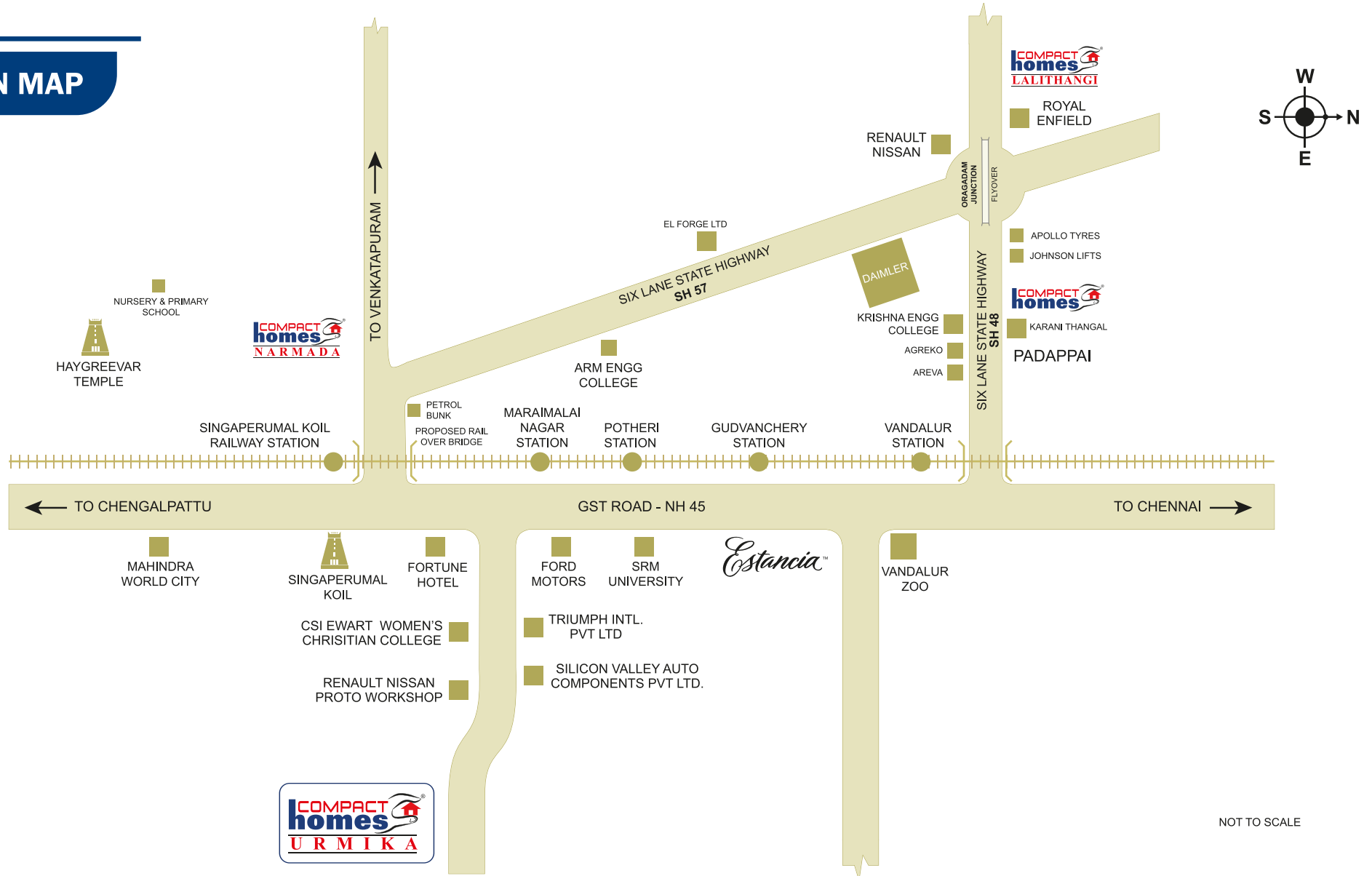


Rainwater Harvesting



Solar Power

LOCATION MAP



Arun Excello Constructions LLP.

Bhattad Towers, #18, West Cott Road, Royapettah, Chennai - 600 014

Contact: 95660 99558, 98403 89684 | Landline: +91 44 2841 2841

E-mail: urmika@arunexcello.com, Web: www.arunexcello.com

RERA Reg No: 0071/2019 | www.tnrra.in

