



ARUN EXCELLO

™

COMPACT
homes 
SANJANI

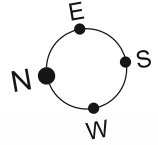
AT CHENGALPATTU



100%
Vastu
Compliant

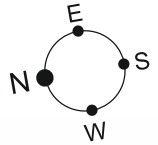
SITE PLAN

FIRST FLOOR

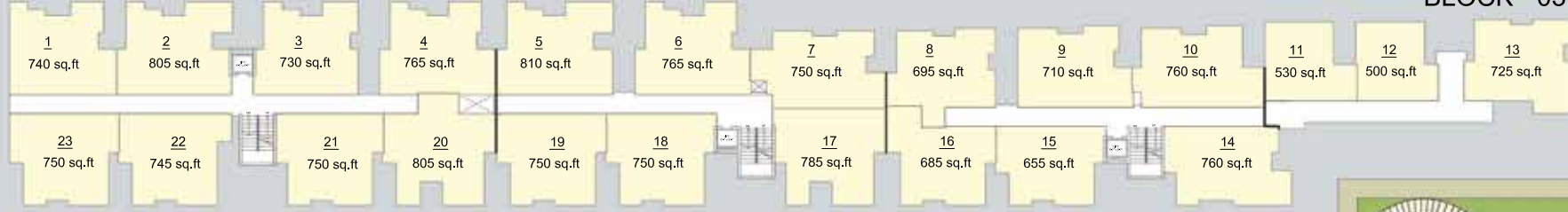


SITE PLAN

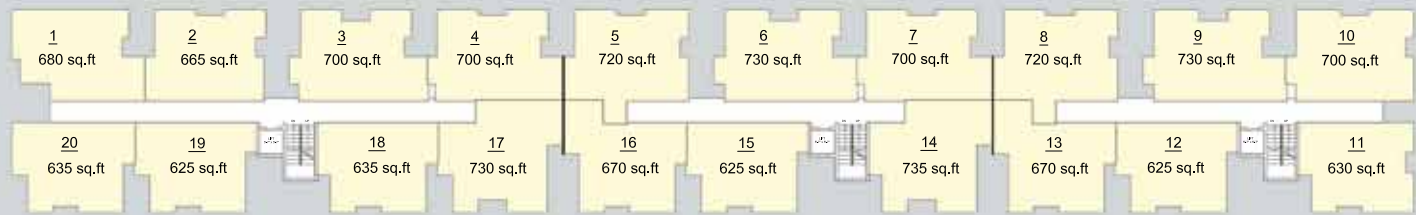
2nd / 3rd / 4th Floor



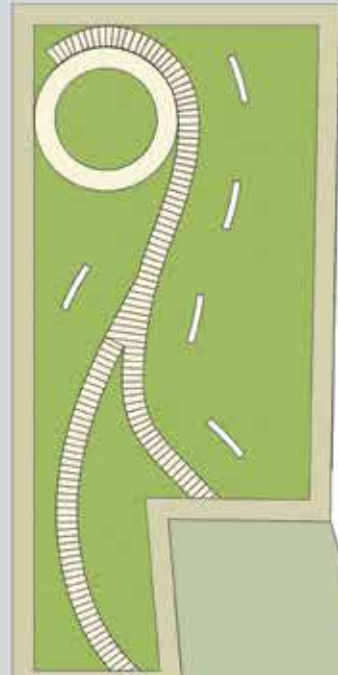
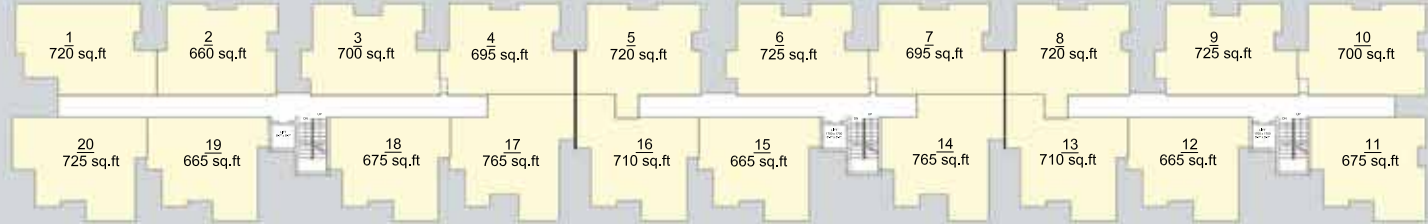
BLOCK - 03



BLOCK - 02



BLOCK - 01



GATE

ROAD

ROAD

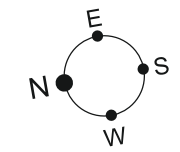
BLOCK - 1
FIRST FLOOR



BLOCK - 1
2nd / 3rd / 4th Floor



BLOCK - 2
FIRST FLOOR



BLOCK - 2
2nd / 3rd / 4th Floor



BLOCK - 3
FIRST FLOOR



BLOCK - 3
2nd / 3rd / 4th Floor



SPECIFICATION

Structure

- RCC framed structure
- Masonry for External & Internal Walls

Flooring

- Glossy Vitrified tile for Living, Dining, Kitchen and Bedroom
- Anti-skid Ceramic tiles for Toilet

Joinery

- Treated Wood Door Frames with Flush Shutter for Main and Bedroom door
- Plastic coated flush door for toilet
- Anodized / Powder coated Aluminium Framed Glazed Windows and Ventilators

Bedrooms

- Glossy Vitrified tiles for flooring with skirting
- Loft and Wardrobe provision in bedroom
- AC point in one bedroom

Kitchen

- Polished Granite Counter Top and Ceramic Glazed Tile Dado up to 1'8" above the working platform
- Stainless Steel Sink with single bowl
- Exhaust Fan point
- Loft and Shelf provision

Sanitary Fittings

- Floor mounted EWC with flush tank, Washbasin of white colour
- Wall Mixer for Hot and Cold water in one toilet
- Provision for health faucet

Painting

- Internal Walls:
One Coat Primer + 2 Coat Putty + 2 Coat Acrylic Emulsion
- External walls:
One Coat Primer + 2 Coat Exterior Emulsion Paint

Toilets

- Ceramic Glazed Tile Dado up to Five feet Height
- Anti-skid ceramic tiles for flooring
- Geysers point in one toilet with wall mixer
- Provision for health faucet

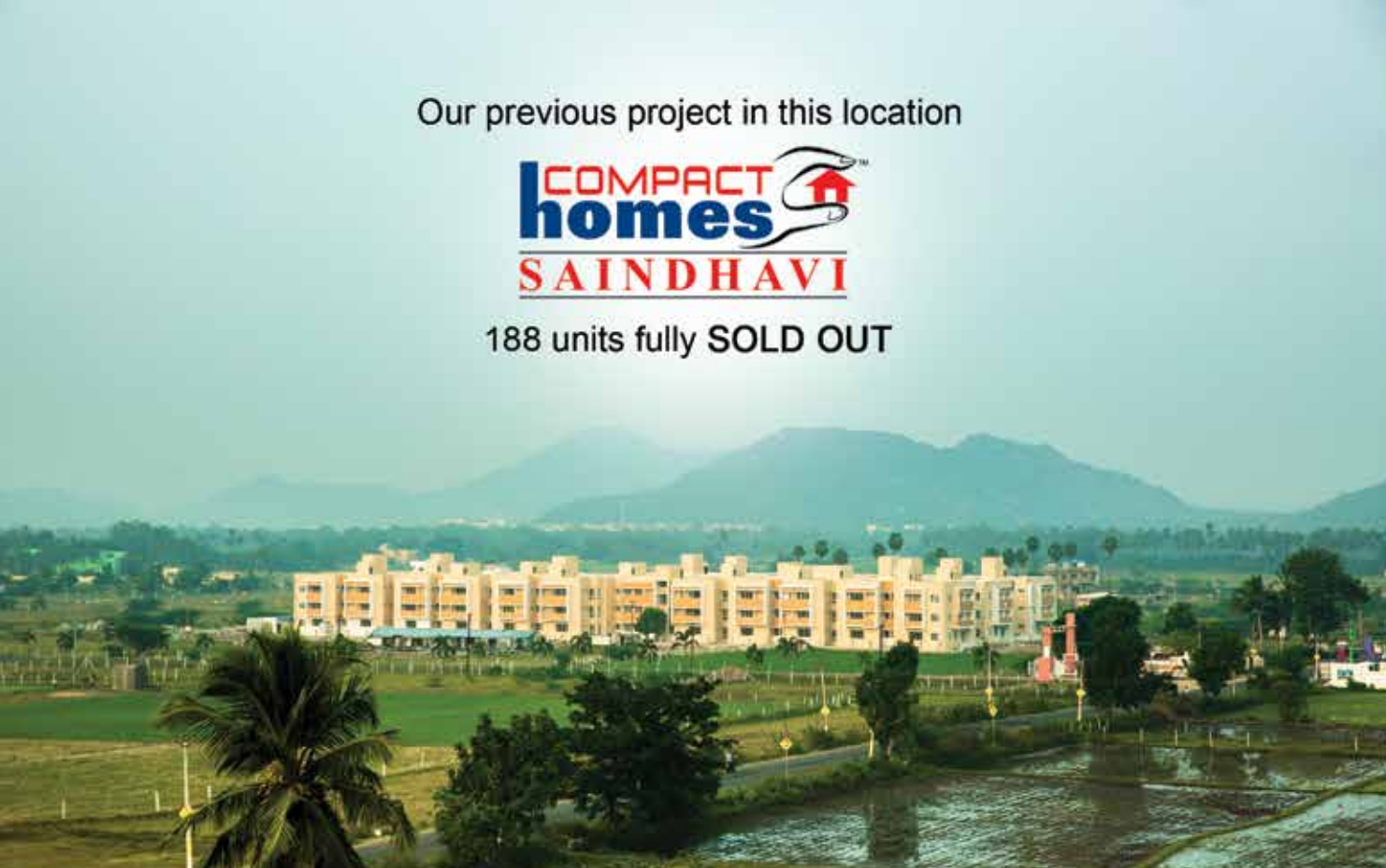
Electrical

- PVC conduits and fully concealed wiring works
- Exhaust fan provision in Kitchen
- Modular Switches from Anchor or equivalent
- TV point in Living room
- A.C point in one bedroom
- D.G Power backup for Common area lighting and amenities
- Solar Power will be provided as per G.O.

Our previous project in this location

COMPACT
homes
SAINDHAVI

188 units fully SOLD OUT



*“SAINDHAVI” has been
awarded by NDTV as*



*“The Best Low Cost
Housing Apartment Project
of the Year 2016”*

SALIENT FEATURES

- Located on a 4 lane State Highway with good road access and well connected to the City and IT Highway.
- Proximity to Mahabalipuram, ECR, OMR and GST Road.
- Close to Mahindra World City.
- Optimum design with minimal common space.
- Potable ground water.
- Clear title.
- Good specification and sturdy construction.
- Close to Educational Institutions like leading school Maharishi Vidya Mandir, Guardian International Nursery School, Saint Joseph & social infrastructure for comfortable living.
- Assured rental returns on investment.

AMENITIES



DG Power Backup



STP with grey
water recycling



Covered Car Parks



Solar Power



Landscape Garden



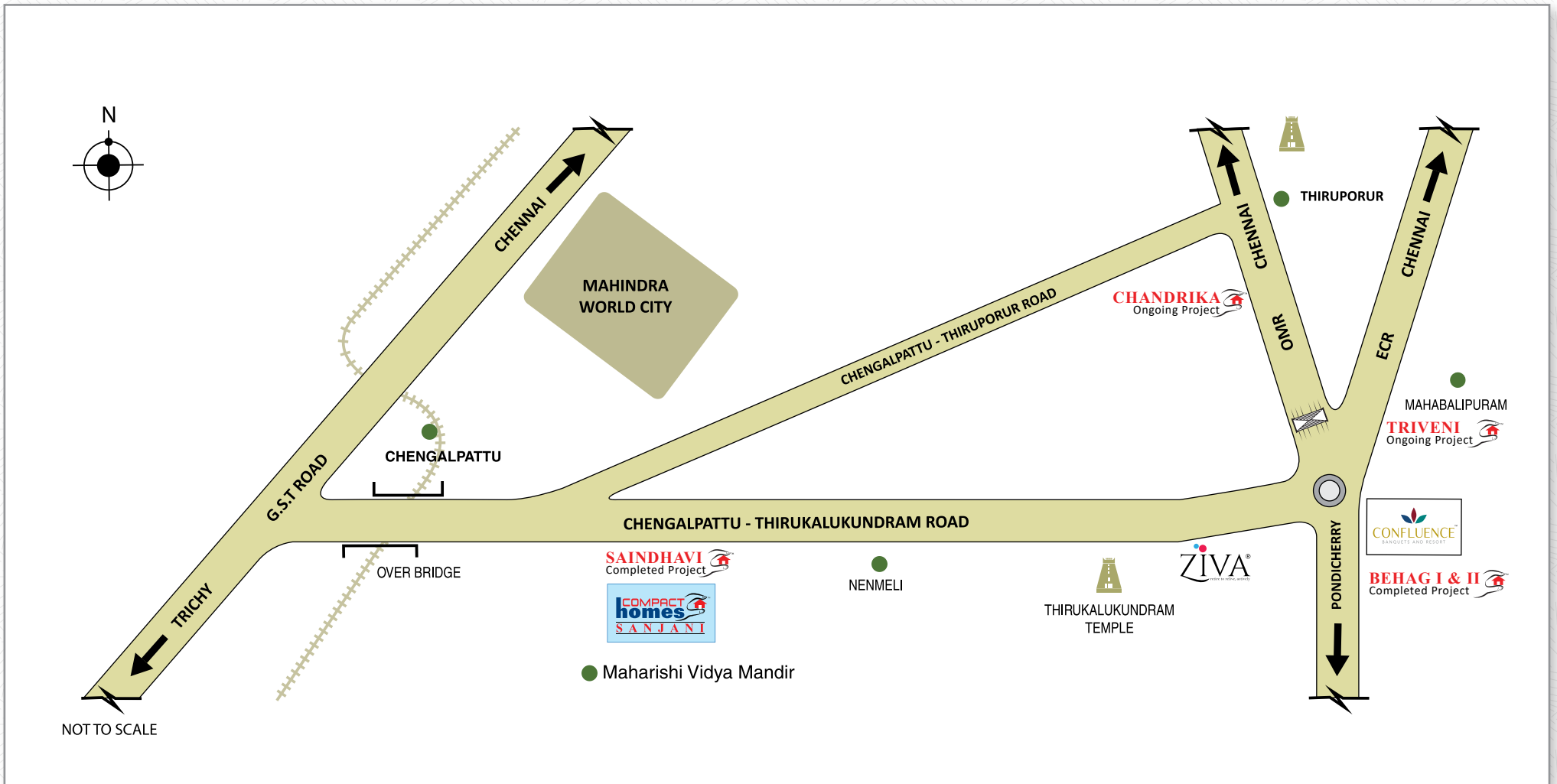
Children Play area



Rainwater Harvesting



Lifts



ARUN EXCELLO CONSTRUCTIONS LLP

Bhattad Towers, #18, West Cott Road, Royapettah, Chennai - 600 014.

Contact : 95660 99558 | 95006 71641

Landline : 044 2841 2841

E-Mail : sanjani@arunexcello.com | www.arunexcello.com

RERA Reg No: 0091/2018 | www.tnrera.in



DISCLAIMER: All Floor Plans, Site Map, Specification, Salient Features and perspective views are tentative in nature and are subject to revision as per the building approvals, Architectural, Structural and Services design requirement. The content in this brochure do not constitute a legal document.